

INTEC SYSTEMS

COINPAY AND DOOR ENTRY SYSTEM

For low to medium use facilities, the CoinPay system provides a cost effective means of raising revenue to assist with the funding of the service. However, the CoinPay is designed without compromise to withstand theft, vandalism and extremes of weather and temperature.

The Intec Systems (UK) Ltd CoinPay range of payment machines are designed to provide a secure, effective and simple means of customer cash payment. It is often fitted in conjunction with a magnetic lock, turnstile, or vehicle barrier, helping to raise revenue towards the running of a facility. Each machine keeps an audit log which can be used to monitor numbers and aid cost management.

The CoinPay range is designed to fulfil the need for a simple, compact cash payment machine providing a revenue generation opportunity when other machines are too bulky or expensive.

The extremely rugged nature of the unit allows it to shrug off vandalism; a 3mm thick stainless steel fascia, anti-jemmy flanges and high quality locks ensure cash is fully protected, making it suitable for use in unmanned locations.

The CoinPay unit may be connected to a magnetic lock, timer, barrier, door, hairdryer, washing machine, dispenser, computer – the list is endless. The unit is designed for installation by an electrician, thus saving on installation cost.



Intec Systems (UK) Limited. 3 Queens Road, Portishead BS20 8HT. Telephone 01275 390 383. Visit www.intectld.co.uk

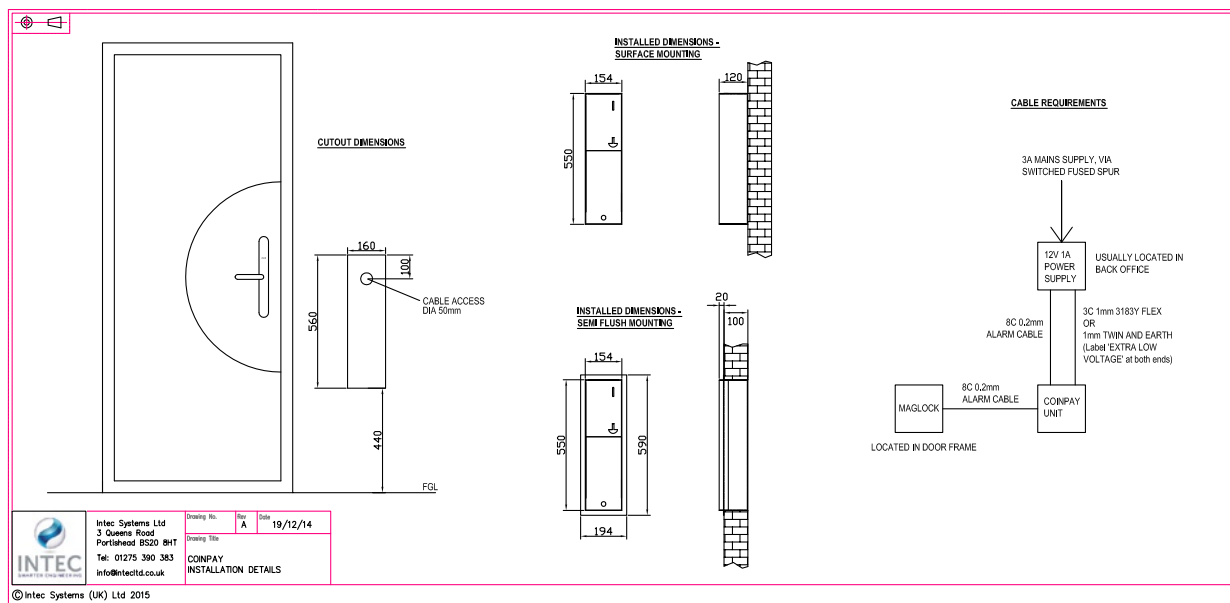
TECHNICAL INFORMATION:

Supply voltage / current: 230v ac, 1A
 Operating voltage: 12v dc
 Operating temperature: -15 to 50 °c
 Material: Stainless steel exterior
 IP rating: IP65
 Size (semi flush model): H 590mm, W 194mm, D (in wall) 100mm, D (outside wall) 20mm
 Size (surface model): H 550mm, W 154mm, D 120mm
 Cash capacity: £100 at 20p tariff
 Coin validator: Fully programmable, with 12 programmable coin / token channels
 Door lock: High security tubular tumbler lock with

copy restricted key
 Cash bag: Self locking tamper proof cashbag with copy restricted key (different key to door)

OPTIONS

GSM reporting system, providing remote web based auditing
 Dual tariff system
 Ticket printer module
 Post mounting version
 RADAR key module
 Open / close 24 / 7 timer



DOOR ENTRY SYSTEM

This system has been designed to be embedded into the frame of a larger machine, or steel door frame. However the frame, design and functionality can be modified by Intec Systems (UK) Ltd to meet the customer's requirements.

The Intec Door entry system develops on the CoinPay concept, allowing a door facility such as a toilet to be used as a semi-automatic system. This means the door entry system has various timers, and inputs / outputs to allow for the addition of extraction timers

and lighting, all triggered from the door. The system also has an LCD for more detailed user and engineer feedback, as well as inputs for lock / unlock buttons, door closed switches and monitored locks.

TECHNICAL INFORMATION

Supply voltage / current: 230v ac, 1A
 Operating voltage: 12v dc
 Operating temperature: -15 to 50 °c
 Material: Stainless steel frame
 IP rating: None (designed to be built into a larger machine)
 Size (semi flush model): H 550mm, W 110mm, D 106mm
 Cash capacity: £100 at 20p tariff

Coin validator: Fully programmable, with 12 programmable coin / token channels
 Cash bag: Self locking tamper proof cashbag with copy restricted key (different key to door)

OPTIONS

GSM reporting system, providing remote web based auditing
 Dual tariff system
 RADAR key module
 Open / close 24 / 7 timer

